

PRÊT. À PARTIR

COUP DE COEUR

BAS-SAINT-LAURENT

TERFA, Canyon des Portes-de-l'Enfer

RUELLAND TRAIL

1 DAY — 12.1 KM

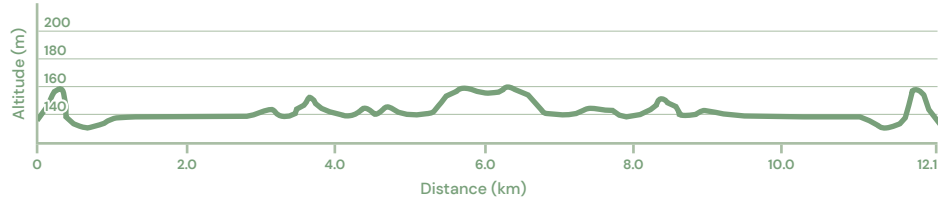
DIFFICULTY INTERMEDIATE

ELEVATION ↗ 222 M ↘ 222 M

ROUTE TYPE OUT & BACK

WAYMARKING RED AND WHITE

DURATION 3 H 30



DESCRIPTION

This trail runs through the territories of the Réserve faunique Duchénier and the Canyon des Portes-de-l'Enfer. The route begins at the Bistro du Grand Sault, at the foot of the waterfall of the same name, and follows the east bank of the Rimouski River to the lodging sector with yurts and ready-to-camp units. This easy hike offers several scenic viewpoints of the river, the old-growth forests along its banks, and the surrounding environment of the Rimouski River. The return is via the same trail.

ESSENTIAL INFORMATION

Trail Access Fee: paid

Best Time to Visit: summer

Restrictions: trail closed during hunting season (September 7 to November 18)

Services and Amenities: equipment rental, eating area, toilets and lodging

Pets: leashed dogs allowed

PARKING AND TRAILS ACCESS

Parking is available at the Bistro du Grand Sault building.

Coordinates: 📍 N48.2495, W68.5274

Open Season: 3 seasons (not accessible in winter)

Number of Spaces: ~ 75

CONTACT

TERFA | Saint-Narcisse-de-Rimouski

infopleinair@terfa.ca

418 735-6063

www.terfa.ca

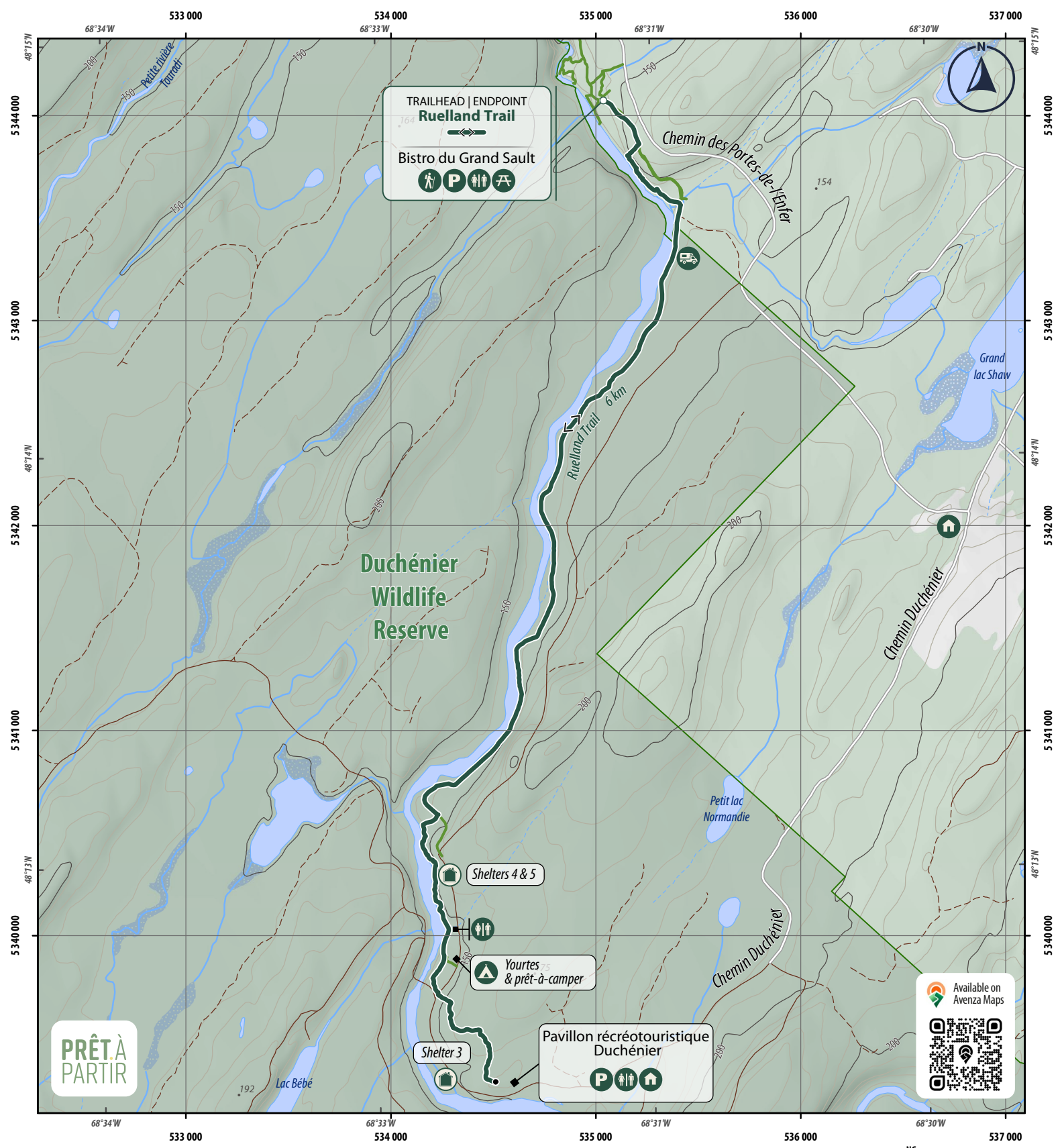
Ruelland Trail
Photo : Charles Tremblay

A product of
RANDO QUÉBEC

TOURISME
BAS-SAINT-LAURENT

EMERGENCY: 911
Check cell service before your visit





TRAILHEAD | ENDPOINT
Ruelland Trail
 ↳ ↳

Bistro du Grand Sault
 🚶 🅑 🚻 🏠

**Duchénier
 Wildlife
 Reserve**

Shelters 4 & 5

Yourtes
 & prêt-à-camper

Shelter 3

Pavillon récréotouristique
 Duchénier
 🅑 🚻 🏠

Available on
 Avenza Maps

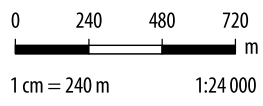
**PRÊT À
 PARTIR**

- Forest path**
- Passable forest road
 - - - Unpaved forest road
- Topography ***
- ²⁷⁵ Spot heights
 - Major contour line
 - Intermediate contour line

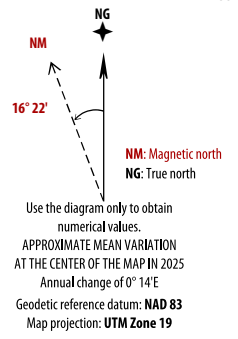
- Hydrography**
- Perennial stream
 - - - Intermittent stream
 - River, stream, lake, pond
 - ▨ Wetland area
- Natural features**
- ▨ Woods
 - ▨ Wildlife reserve area

- Trail**
- Hiking trail
 - km Distance between two points

- 🏠 Camping
- 🅑 Parking
- 🏠 Picnic area
- 🚐 RV campground
- 🏠 Shelter
- 🚻 Toilet
- 🚶 Trailhead
- 🏠 Visitor center



This map incorporates information from government sources. For presentation purposes, some data may have been modified, which may have altered the original data.
 Data sources:
 © Government of Quebec, 1992-2025 ;
 © Rando Quebec, 2025



* Contour interval: 10m